

2018 AIRP Course in Hong Kong

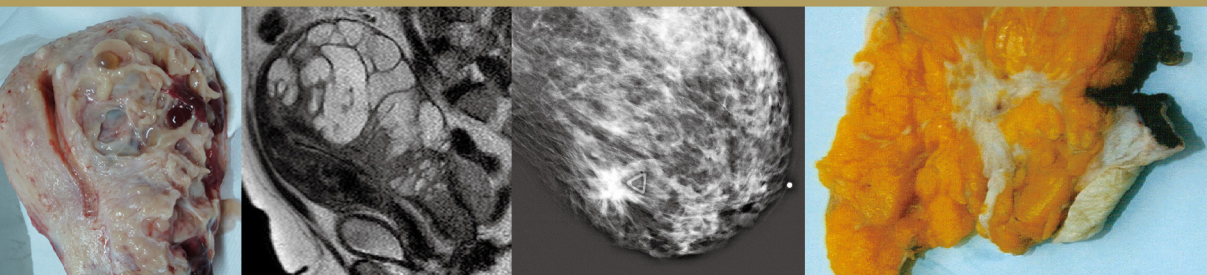
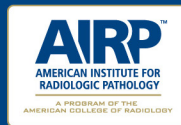
30th June – 2nd July 2018

Hong Kong Academy of Medicine Jockey Club Building

Subspecialty Focus:
Musculoskeletal Radiology
Breast Imaging
Women's Imaging

The renowned, unique training course for the pathophysiologic understanding of disease as the basis for radiologic interpretation

Register now and learn more at
airp.org and hkcr.org



Course Organisers

Dr. Lilian Leong (Hong Kong)

Dr. Mark D. Murphey (USA)

Key Speakers



Doctor Kransdorf is the past Chief of Musculoskeletal Radiologic Pathology at the Armed Forces Institute of Pathology in Washington, D.C. He is a past President of the Society of Skeletal Radiology and an Editor of Skeletal Radiology, the Journal of the International Skeletal Society and the Official Journal of the Society of Skeletal Radiology. He was a Visiting Professor in Musculoskeletal Radiology, Department of Radiologic Pathology, Armed Forces Institute of Pathology, Washington, DC, for more than 25 years.

Prof. Mark J. Kransdorf

M.D., F.A.C.R. (MSK)
(Visiting Faculty in
Musculoskeletal Radiology)

He is the author of four textbooks, more than twenty book chapters and over 150 peer reviewed journal articles. He was inducted as a Fellow in the American College of Radiology in 2007 and is the recipient of the 2008 Distinguished Mayo Clinician Award.



Jennifer Harvey is a Professor of Radiology at the University of Virginia Health System, where she serves as Chief of the Division of Breast Imaging, Co-Director of the UVa Breast Care Program, and Vice-Chair of Faculty Development.

Prof. Jennifer A. Harvey

M.D., F.A.C.R.
(Chief in Breast Imaging)

She is the author of "Making the Diagnosis: A Practical Approach to Breast Imaging," and is the section chief for Breast Imaging at the American Institute for Radiologic Pathology (formerly AFIP). She serves on or chairs several national committees for the ABR, ACR, and SBI. She serves on the Editorial Board of RadioGraphics and JACR, and is a special consultant to the editor of Radiology.



Darcy Wolfman, MD, is Clinical Associate, Johns Hopkins School of Medicine, Community Radiology Division.

Prof. Darcy J. Wolfman

M.D.
(Section Chief in Genitourinary Imaging)

She completed her diagnostic radiology residency at Oschner Clinic in New Orleans, LA and abdominal imaging fellowship at Johns Hopkins University in Baltimore, MD. Dr. Wolfman is a recognized expert in ultrasound and abdominal imaging, lecturing nationally and internationally.

COURSE SCHEDULE

30th June 2018 (Saturday)

0800 - 0845	Uterine Imaging: Part I	Darcy J. Wolfman, M.D.
0845 - 0930	Uterine Imaging: Part II	Darcy J. Wolfman, M.D.
0930 - 1000	COFFEE BREAK	
1000 - 1015	OPENING	
1015 - 1100	Female Pelvic Floor Lesions	Darcy J. Wolfman, M.D.
1100 - 1145	Practical Approach to Adnexal Masses on US	Darcy J. Wolfman, M.D.
1145 - 1230	Shoulder Imaging: MRI/Arthroscopy Correlation	Mark J. Kransdorf, M.D., F.A.C.R
1230 - 1400	LUNCH	
1400 - 1445	Metal-on-Metal Arthroplasty: The Expanding Spectrum of Complications	Mark J. Kransdorf, M.D., F.A.C.R
1445 - 1530	Commonly Encountered Incidental Bone Lesions on CT and MR Imaging	Mark J. Kransdorf, M.D., F.A.C.R
1530 - 1600	COFFEE BREAK	
1600 - 1645	Commonly Encountered Incidental Soft Tissue Lesions on CT and MR Imaging	Mark J. Kransdorf, M.D., F.A.C.R
1645 - 1730	MSK Case Review (Seminar)	Mark J. Kransdorf, M.D., F.A.C.R

1st July 2018 (Sunday)

0800 - 0845	MSK Biopsy: Fundamental Concepts	Mark J. Kransdorf, M.D., F.A.C.R
0845 - 0930	MSK Biopsy: Useful Techniques	Mark J. Kransdorf, M.D., F.A.C.R
0930 - 1015	Soft Tissue Tumors: Systematic Approach to Diagnosis	Mark J. Kransdorf, M.D., F.A.C.R
1015 - 1045	COFFEE BREAK	
1045 - 1130	Soft Tissue Tumors: Post Treatment Imaging	Mark J. Kransdorf, M.D., F.A.C.R
1130 - 1215	Breast Calcification Made Easy	Jennifer A. Harvey, M.D., F.A.C.R
1215 - 1400	LUNCH	
1400 - 1445	Asymmetries	Jennifer A. Harvey, M.D., F.A.C.R
1445 - 1530	Architectural Distortion: Detection and Management	Jennifer A. Harvey, M.D., F.A.C.R
1530 - 1600	COFFEE BREAK	
1600 - 1645	Managing Women with Dense Breast Tissue	Jennifer A. Harvey, M.D., F.A.C.R
1645 - 1730	BI-RADS 2, 3, or 4: A Case Review (Seminar)	Jennifer A. Harvey, M.D., F.A.C.R

2nd July 2018 (Monday)

0800 - 0845	Unusual Breast Cancers	Jennifer A. Harvey, M.D., F.A.C.R
0845 - 0930	The Path is Back on the Core Biopsy – Now What?	Jennifer A. Harvey, M.D., F.A.C.R
0930 - 1015	Tomosynthesis in Practice	Jennifer A. Harvey, M.D., F.A.C.R
1015 - 1045	COFFEE BREAK	
1045 - 1130	Practical Approach to Breast MRI	Jennifer A. Harvey, M.D., F.A.C.R
1130 - 1215	Case-Based Learning: MRI (Seminar)	Jennifer A. Harvey, M.D., F.A.C.R
1215 - 1400	LUNCH	
1400 - 1445	Fetal Imaging: Part I	Darcy J. Wolfman, M.D.
1445 - 1530	Fetal Imaging: Part II	Darcy J. Wolfman, M.D.
1530 - 1600	COFFEE BREAK	
1600 - 1645	Fetal Imaging: Part III	Darcy J. Wolfman, M.D.
1645 - 1730	AIRP GU Best Case Conference (Seminar)	Darcy J. Wolfman, M.D.

* The programme is subject to change without prior notice.

CME/CPD ACCREDITATION

CME/CPD Points				
Academic Accreditations	30 th June 2018	1 st July 2018	2 nd July 2018	Whole Function
Hong Kong College of Radiologists	7 (Cat. A)	7 (Cat. A)	7 (Cat. A)	21 (Cat. A)
The Hong Kong College of Anaesthesiologists	7 (non-Ana Passive)	7 (non-Ana Passive)	7 (non-Ana Passive)	15 (non-Ana Passive)
Hong Kong College of Community Medicine	6	6	6	10
College of Dental Surgeons of Hong Kong	7 (Cat. B)	7 (Cat. B)	7 (Cat. B)	21 (Cat. B)
Hong Kong College of Emergency Medicine	6 (PP)	6 (PP)	6 (PP)	18 (PP)
The Hong Kong College of Family Physicians	5 (Cat. 5.2)	5 (Cat. 5.2)	5 (Cat. 5.2)	10 (Cat. 5.2)
The Hong Kong College of Obstetricians & Gynaecologists	5 (non O&G passive)	5 (non O&G passive)	5 (non O&G passive)	5 (non O&G passive)
The Hong Kong College of Orthopaedic Surgeons	Pending			
The Hong Kong College of Otorhinolaryngologists	3.5 (Cat. 2)	3.5 (Cat. 2)	3.5 (Cat. 2)	10.5 (Cat. 2)
Hong Kong College of Paediatricians	-	5 (Cat. E)	-	5 (Cat. E)
The Hong Kong College of Pathologists	7 (PP)	7 (PP)	7 (PP)	21 (PP)
Hong Kong College of Physicians	-	-	-	3
The Hong Kong College of Psychiatrists	6 (PP/OP)	6 (PP/OP)	6 (PP/OP)	18 (PP/OP)
The College of Surgeons of Hong Kong	6 (passive)	6 (passive)	6 (passive)	18 (passive)
MCHK CME Programme	5 (passive)	5 (passive)	5 (passive)	10 (Passive)
Radiographers Board of Hong Kong	Pending			

Please remember to register for your CME/CPD points on each day of the course.

INDUSTRY SUPPORT & TECHNICAL EXHIBITION

Technical Exhibition will be held concurrently with the course at Hong Kong Academy of Medicine Jockey Club Building on 30th June to 2nd July 2018. Exhibition spaces and other sponsorship opportunities are available. For interested parties or exhibitors, please contact the HKCR Secretariat directly:

Hong Kong College of Radiologists

Room 909, 9/F, Hong Kong Academy of Medicine Jockey Club Building, 99 Wong Chuk Hang Road, Aberdeen, Hong Kong SAR, China
Tel: (852) 2871 8788 Fax: (852) 2554 0739 Email: enquiries@hkcr.org

COURSE INFORMATION

Date: 30th June - 2nd July 2018

(Saturday to Monday)

Time: 08:00 - 17:30

Venue: Hong Kong Academy of Medicine
Jockey Club Building,
99 Wong Chuk Hang Road, Aberdeen,
HKSAR, China
香港黃竹坑道99號
香港醫學專科學院賽馬會大樓
www.hkam.org.hk



REGISTRATION

Online Registration



Registration is available only through Online Registration System. Scan the QR Code or go to web link below: <http://www.seamlesshk.com/airp>

Registration Fee

Discounted Rate for Early Bird Registration (Before 30 th April 2018)	HKD\$4,000
Full Registration (3 days)	HKD\$5,000

Registration fees for delegates include a copy of programme book, coffee breaks and lunch(es) during the meeting period.

Important Information

- The registration will not be processed or confirmed if payment is not forwarded to the **Registration Secretariat**:
2018 AIRP Course in Hong Kong Registration Secretariat
c/o Seamless Communications Company Limited
Room A04, 13/F, Manning Industrial Building
116 – 118 How Ming Street, Kwun Tong, Kowloon, Hong Kong SAR, China
Tel: (852) 3612 4968 Email: airp2018@seamlesshk.com
- Registration fees depend on the date your payment is received and confirmed by the Registration Secretariat. The fees may be adjusted accordingly if the payment is not received by the relevant registration deadlines.
- The registration will be completed upon settling of the payment. An official receipt will be issued after clearance of the payment.

Method of Payment

Payment of the registration fee should be made by:

- Credit Card in Hong Kong Dollars (HKD) via **PayPal** (VISA / MASTERCARD / AMERICAN EXPRESS / CHINA UNION) or
- Cheque in Hong Kong Dollars (HKD) made payable to “**Seamless Communications Company Limited**”.

For overseas delegates, personal cheques are NOT accepted.

The cheque payment (either indicating the Online Registration Number or providing a copy of the Online Registration Acknowledgement Email) should be sent to the **2018 AIRP Course in Hong Kong Registration Secretariat** after registration.

Cancellation Policy

In the event of cancellation, a refund of the total registration fee paid (minus a 25% administration fee) will be made, on provision of a **written notice received by the Registration Secretariat on or before 31st May 2018**. After this date, no refund can be made for cancellation. Please note that all refunds will be issued only after the meeting. In case of cancellation due to bad weather or other uncontrollable factors, no refund will be entertained.